

A project for the educational support of foreign residents 2017

# Academic/ career guidance

For your future・・・

～What are your plans after junior high school?～

# Contents

I. The school system in Japan

II. Further studies after graduation from junior high school

Q & A

III. Resources

## I. School system in Japan

### 1. Educational system in Japan

Elementary and secondary educations are compulsory in Japan.

Compulsory Education	Aged 6	Elementary School (6 years)				
	* remark 3					
	Aged 12	Junior High School (3 years)				
	Aged 15					
	Aged 18	Senior High School (3 years) *remark 1	Special training School (1 year or more) *remark 2	Vocational Technical School (1 year or 2 years)	Higher Technical School (5 years)	
	Aged 22	University (4 to 6 years)	Junior College (2 years)	Technical College (1 year or more) *remark 2		
		Graduate School (1 to 5 years)				

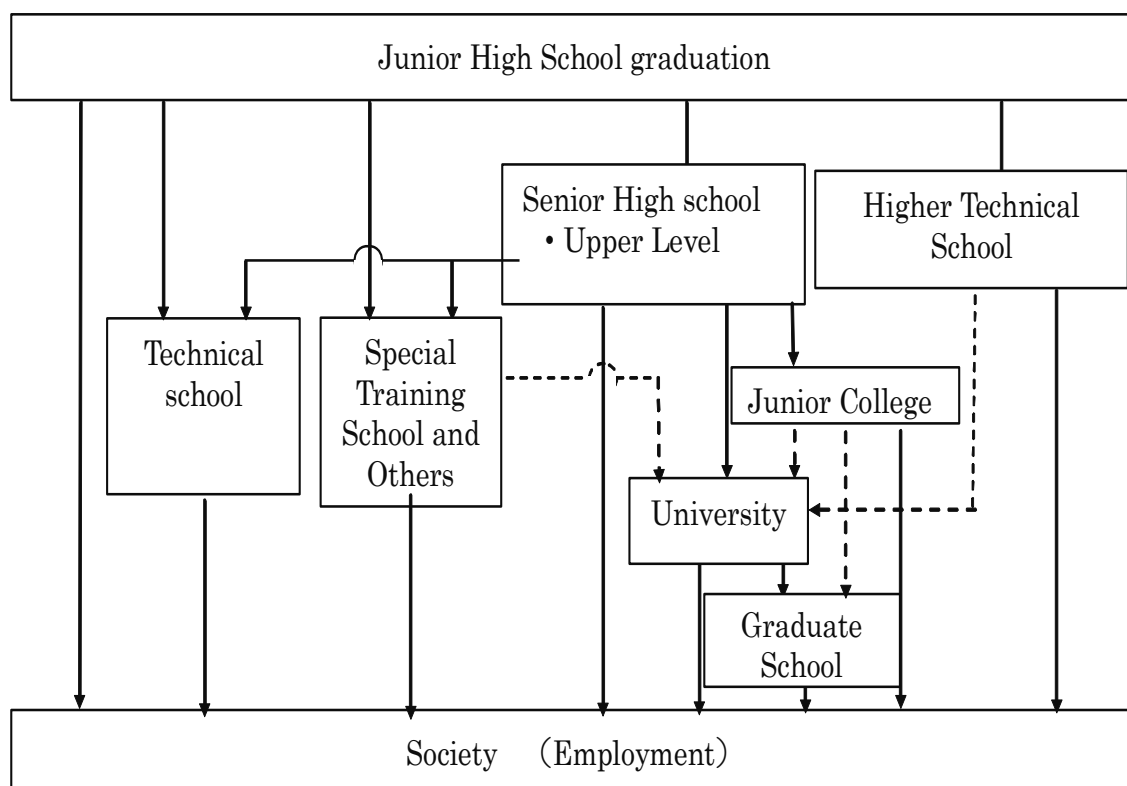
(remark 1) \* Normally, it takes 4 years to complete a part-time course, however students can graduate within 3 years by completing both part-time and correspondence courses at the same time.

(remark 2) \* Courses including clothing, home economics, commerce, industry, medical services, culture, etc. are available.

(remark 3) \* Compulsory education is not applicable to children of foreign nationalities.

## 2. Career and further studies after junior high school graduation

The flow chart on career and further studies after junior high school are shown below:



### II. Further studies after junior high school graduation

There are various ways to continue your studies after graduating from junior high school. You may choose to go on to a senior high school, higher technical school, special training school, or vocational technical school. For those who would like to work, they may choose to attend part-time and correspondence courses after working hours. Please consult your teachers for details.

#### 1. Difference between junior and senior high schools

Since junior high school education is compulsory, as a rule, everyone is automatically promoted onto the next grade every year. However, in senior high school, there is a possibility of not being able to be promoted nor graduate if students do not perform well in their studies or have poor class attendance. Regulations differ from school to school.

#### 2. Can anyone take the entrance examinations for senior high school?

(1) Individuals aged 15 or above, who graduated from a junior high school in Japan or received a 9-year education overseas, are eligible to take the entrance examination. For those who received only an 8-year education overseas, they need to:

- ① Study 1 more year in an educational institution in Japan, or
- ② Pass the “Junior High School Graduation Certification Examination” which is held in late October every year.

(2) Junior High School Graduation Certification Examination

This examination is designed to acknowledge a person's educational ability as equivalent to the level of junior high school. It qualifies those who pass it to take senior high school entrance examination. Individuals without Japanese nationalities who are aged 15 or above before the end of the school year are eligible to take the entrance examination.

Application period: starts from August

Contact: Shiga Prefectural Board of Education secretariat, Pre-school, Elem. & Junior high school division

Tel. 077-528-4665

More details provided in the homepage of the Ministry of Education, Culture, Sport, Science, and Technology:

([http://www.mext.go.jp/a\\_menu/shotou/sotugyo/index.htm](http://www.mext.go.jp/a_menu/shotou/sotugyo/index.htm) )

(3) In case of returning to home country

Please apply all the necessary documents (testimonials, academic transcripts, educational curriculum certificate, and graduation certificate) in advance. It is necessary to go through all the procedures of official certificate application set up by the Ministry of Foreign Affairs of Japan.

3. Types of schools

Senior high schools in Japan roughly fall into 2 categories, **public senior high schools and private senior high schools**.

Moreover, they are divided into **3 types** according to the method of school attendance.

(1) Senior high schools

a) Differences between public senior high schools and private senior high schools

A. Main differences between public schools and private schools are shown on the tables below:

Public senior high schools
◇Established by prefecture administrative bodies
◇Low tuition fees
◇Coeducation schools
◇School Grade Report (*1) and academic test
◇Screening of applicants takes place in early February and March

⇔

Private senior high schools
◇Established by private organizations
◇High tuition fees
◇Boys' school, girls' school and coeducation are available
◇Emphasizes on entrance examination and interviews
◇Two types of applications are available, "exclusive application" and "multiple application" (*2)
◇Screening of applicants takes place in early February (in Shiga prefecture)

<Terminology explanation>

(\*1) School Grade Report

Academic performance in subjects (9 subjects) on the third year of junior high school will affect the admission to senior high school. The school grade report is an absolute 5-stage evaluation system. The report includes the academic performance in junior high school and it will be sent to senior high school for reference.

(\*2) "Exclusive application" and "Multiple applications"

"Exclusive application" is only for private senior high schools, **once the applicant passes the entrance test, he/she has to go to that school he/she applied for, and is not allowed to take another public high school examination held later**. On the other hand, a "Multiple application" applicant has to enter a public high school once accepted.

## B Full-time courses, part-time courses and correspondence courses

Depending on their school hours or method, senior high schools are divided into the following types. For full-time courses, students attend school during daytime, for part-time courses, daytime and evening classes are available. For correspondence courses, students study at home by means of the teaching materials provided or through television projects. They hand in homework, attend classes in school and receive guidance classes on Sundays, etc. Certain schools with part-time courses and correspondence courses make use of a credit-based system instead of academic year system.

### b) Subjects in senior high schools

General Subjects, subjects mainly for vocational training (agriculture, industry, commerce, home economics and welfare, etc.) and non-vocational special educational subjects (science, mathematics, music, fine arts, physical education) are available. In addition, there are comprehensive subjects in which grouped professional education is provided.

## (2) Other educational institutions

### ① "Technical college" (Shiga Prefecture's Technical Schools)

In the prefecture, there are 2 technical schools namely, Kusatsu Technical College and Maibara Technical College which provide six months to one year vocational training on knowledge and techniques for youngsters and individuals who wish to get new jobs or change jobs.

The courses below accept applications of new graduates from junior high schools.

School Name	Training period	Course	Prescribed number of students
Maibara Technical College (Higher Technical Maibara School)	1 year	Wooden building architecture	Approx. 5
		Technical metal processing	Approx. 5
Kusatsu Technical College (Higher Technical Kusatsu School)	1 year	Fashion design	Approx. 5
		Welding	Approx. 5
		Painting	Approx. 5

### ② Special Training Schools and others

Apart from high schools, there are specialized training schools where they can receive practical vocational education and specialized technical education, and miscellaneous schools where they can learn Japanese dressmaking, bookkeeping, the use of the abacus, car maintenance, cooking and nutrition, hair dressing, beauty care, computer skills, English conversation, manufacturing, and many others.

There are 2 special training schools in the prefecture which admit junior high school graduates. You will find the details on the table below.

### Special training schools which include upper secondary courses and accept junior high school graduates

(Special training schools approved by Shiga prefecture as of June, 2017)

	School	Location	Courses (period)	Technical cooperation
Special Training Schools	Otsu Medical Association Nursing School	Otsu	Practical Nursing (2 years)	
	Minakuchi Women's Vocational School	Koka	Fashion (3 years)	Koyodai high school (Correspondence course, General course)

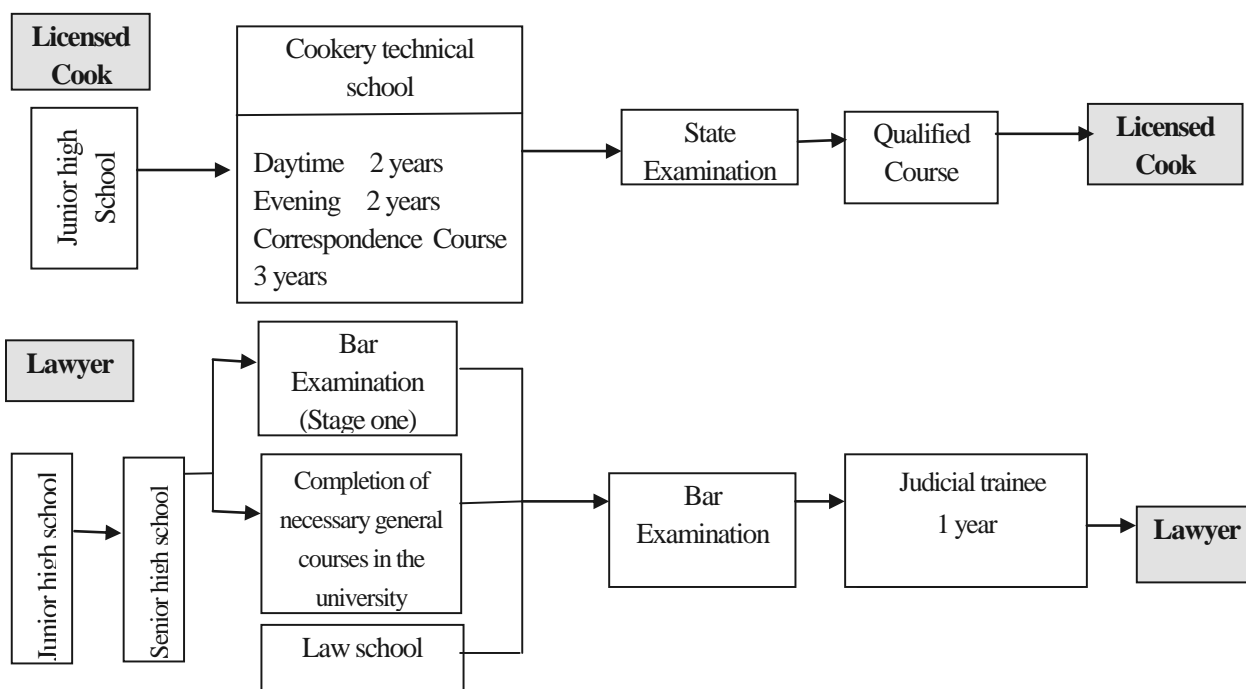
#### (3) Jobs and qualifications

To apply for certain jobs, the qualification of passing the state examination is required. To apply for certain examinations, high school academic qualifications or even a university education may be required. On the other hand, there are jobs and examinations that require no specific qualifications. Therefore, one has to bear in mind that qualification requirements vary from job to job and it is good to have a knowledge of some of the necessary conditions first.

Some examples of qualifications and their corresponding occupations are explained below:

- A. Jobs requiring a junior high school education: licensed cook, hair- stylist, hairdresser, etc.
- B. Jobs requiring a university education or the equivalent knowledge and techniques: doctor, dentist, veterinarian, pharmacist, teacher, judge, lawyer, certified accountant, counselor for better quality of life, social education officer, child welfare commissioner, etc.
- C. Graduates of a general course in senior high school may apply for the following positions: nurse, childcare worker, civil servant, librarian, health nurse, midwife, etc.
- D. Graduates of an industrial course in senior high school may apply for the following positions: gas welder, boiler operator, electrical engineer (type 1, 2, 3), qualified architect (level 1 and 2), car mechanic (level 2 and 3), etc.
- E. Graduates of a vocational course in senior high school may apply for the following positions: tax accountant, administrative scrivener, licensed social insurance consultant, information technology engineer, certified welfare worker, etc.

Attaining the qualifications of a licensed cook and a lawyer flowchart:



※ The Nationality Clause:

“According to the clause, Japanese nationality is a prerequisite for taking the recruitment examination of general civil servants who are involved in the state-run organizations and services.” (Source: Wikipedia). Although recently, there have been movements of abolishing the Nationality Clause in local public entity levels and the state has already loosened the restrictions in the fields of education and medicines. Depending on the field of work and the location, it is better to verify in advance whether the Nationality Clause is applicable to the recruitment examination or not.

#### 4. School fees

After finishing junior high school, payment of tuition fees is required to study in senior high school. Payment of “examination fee” is required to take the entrance examination, “admission fee” is required for admission. Moreover, a fixed amount of “tuition fee” is required every year.

For private senior high schools, “facility fee” (for replenishment of buildings and equipments) will be charged, and for vocational schools, “laboratory and practical training fee” will be charged. These fees are called “school fees”.

Other educational expenses, such as textbooks, are not free in prefectural public senior high schools.

The necessary school fees vary depending on the type of school. There is a substantial difference depending on whether they are state-run or private.

Please confirm the charges of the individual schools you wish to apply for.



( 1 ) Admission screening fees / enrollment fees

	Prefectural senior high school				Full time private school (e.g.)
	Full time	Part-time	Credit-based	Correspondence course	
Examination fee	2,200 yen	950 yen	950 yen	Nil	20,000 yen
Admission fee	5,650 yen	2,100 yen	2,100 yen	500 yen	150,000 yen
Uniform	40,000 to 60,000 yen	nil	0 to 30,000 yen	nil	Approx. 70,000 yen
Others (PE uniform, etc.) (illus.)	Approx. 50,000 yen (Tuition fee for the first academic year)	Approx. 40,000 yen (Tuition fee for the first academic year)	Approx. 25,000 yen (incl. teaching material fees)	Approx. 20,000 yen (incl. teaching material fees)	70,000 yen
Total	Approx. 100,000 yen	Approx. 43,000yen	Approx. 28,000 yen	Approx. 20,000 yen	Approx. 310,000 yen

\* Admission fee must be paid at the appointed time.

( 2 ) Tuition fees and other annual fees

	Prefectural senior high school				Full time private school (e.g.)
	Full time	Part-time		Correspondence course	
		Non credit-based	Credit-based		
Tuition fee (annual)	118,800 yen	32,400 yen	1,750 yen (per credit)	330 yen (per credit)	360,000 yen
Parents-Teachers Association, etc. (annual)	Tuition fees vary depending on schools, courses, and subjects.				20,000 yen
Reserve fund for study tours (annual)	Tuition fees vary depending on schools, courses, and subjects.				100,000 yen
Others(Annual) Textbooks, etc.	Tuition fees vary depending on schools, courses, and subjects.				Facilities fee 200,000 yen
Total	May differ for each school				Approx 680,000 yen

※ Textbooks and teaching material fees, Parent-Teacher Association fees and reserve funds for school tours are determined by individual schools.

※ Students who use JR, private railways and buses to school may buy commuter pass as a concession for students.

※ Tuition support programs

The High School Tuition Support Fund system provides assistance on school fees to households with students in national, public or private high schools and other designated educational institutions. Households with parents or guardians paying less than 304,200 yen on municipal income tax (annual income of approx. 9.1 million yen)\* are eligible for assistance from the Tuition Support Fund for the school fees. Additional tuition support funds are supplemented to households with private high school students, depending on the income of the parents/guardians. There is no need to repay the Tuition Support Funds.

In addition, Shiga prefecture's curriculum fee reduction/exemption program is also available for households with students in private high schools and the like within the prefecture, as long as their parents/guardians reside within the prefecture and the household's income meets the standard.

→ Please ask your school for details after enrollment.

\* The amount of the municipal income tax is determined according to the combined total income of the applicant's parents/guardians. It is based on an assumption of a family of four with only one parent/guardian working and with one senior high school student (aged 16 or over) and one junior high school student, with an annual income of approximately 9.1 million yen.

### 5. Scholarship (Loan Fund) system

A financial assistance system is available for students who have difficulties in paying their school fees. There are restrictions on the applicant's financial situation. Please consult your school for details.

The summary of available loan funds is as follows. Please contact the corresponding institution for information on the qualifications, restrictions and repayment method of the loan fund.

Scholarship/loan	Monthly loan (interest-free)	Application Period	Contact (tel)
Shiga prefecture scholarship	<p>○Scholarship (Monthly)</p> <p>State and public school, living with family: 18,000 yen</p> <p>State and public school, living separately: 23,000 yen</p> <p>Private school, living with family: 30,000 yen</p> <p>Private school, living separately: 35,000 yen</p> <p>○Admission fund</p> <p>Lump-sum allowance (basic): 50,000 yen</p> <p>(additional amount for private school): 150,000 yen</p> <p>(The total amount will not exceed the actual admission fee )</p>	<p>Intensive application period : April</p> <p>Enrollment application period: as required</p>	<p>School education section, Shiga Prefectural Board of Education, General Education Division</p> <p>Tel :077-528-4587</p>
Educational subsidies for part-time and correspondence course for senior high schools in Shiga	<p>Prefectural senior high school (part time, correspondence course)</p> <p>Private senior high school (correspondence course) 14,000 yen</p> <p>Private senior high school (part time) 29,000 yen</p>		<p>Consult with your senior high school or the school education section, Shiga Prefectural Board of Education, General Education Division</p> <p>Tel: 077-528-4587</p>
Scholarship Association for Orphaned Children of Traffic Accident Victims	<p>Monthly amount 20,000、30,000 or 40,000 yen as selected by applicants</p>	<p>From April to 30<sup>th</sup> Sept</p> <p>From Oct to late Feb</p> <p>* (Application is accepted even after admission)</p>	<p>Scholarship Association for Orphaned Children of Traffic Accident Victims</p> <p>Tel:0120-52-1286</p>
Ashinaga Scholarship Association (orphaned children of disaster victims or illness)	<p>State and public senior high school: 25,000 yen</p> <p>Private senior high school: 30,000 yen</p> <p>Special training school and others: 40,000 yen</p>	<p>Apr to Jul</p> <p>Aug to Dec</p> <p>* (Application is accepted even after admission)</p>	<p>Scholarship Division, Ashinaga Scholarship Association</p> <p>Tel: 0120-77-8565</p> <p>URL:<a href="http://www.ashinaga.org/">http://www.ashinaga.org/</a></p>
The society of Mary St. Joseph scholarship fund	<p>Monthly 20,000 yen (No obligation to repay)</p> <p>Scholarship will be granted until graduation</p>	<p>8<sup>th</sup> May to 7<sup>th</sup> July</p> <p>(For applications in 2017)</p>	<p>As a general rule, inquiries should be made via school (no personal inquiries) to the “<b>Mitsui-Sumitomo Shitaku Literu Jutaku-jigyo-bu, Koueki shintaku Group Catolic Maria Shogaku ikuei kikin</b> ( Society of Mary (Catholic) Saint Joseph Scholarship Fund )” Tel: 03-5232-8910</p> <p>URL: <a href="http://www.marianist.jp/sm/scholarship080425_2/index.html">http://www.marianist.jp/sm/scholarship080425_2/index.html</a></p>

※ Independent scholarships, reduction and exemption schemes are also available in private senior high schools. Please consult your class teacher and your school for details on the application period and types of scholarships available.

- ※ Loans granted by local public entities are also available. Please consult your class teacher for details.
- ※ Repayment of loans is an obligation.

※ Supplemental Scholarship Fund, to be used for educational expenses other than the curriculum fee, is available for low-income (tax-exempt) households with students in high school or other educational institution (those eligible for Tuition Support Fund system, excluding special education high schools) who enrolled in or after April 2014 and whose parents/guardians reside within Shiga Prefecture.

Please ask your school for details and necessary procedures after enrollment.

## 6. Student selection process in senior high school

### (1) Types of student selection

There are 3 types: “General selection”, “Referral selection”, “Special selection” and “Referral selection in sports, culture and arts”.

“General selection”... Based on scores of academic performance tests and personal evaluation report provided by the junior high school. There are also interviews and practical examinations.

“Referral selection”...Based on 1 or 2 of the following criterias: interview, essay writing, practical examination

“Special selection”... Based on at least 2 of the following criterias: general questions, short essay, oral examination, practical examination

“Referral selection in sports, culture and arts”...Based on at least 1 of the following criteria: practical examination, interview, essay writing or short essay. In schools accepting “Special selection”, general questions of “Special selection” can be included.

※Previous questions from the Academic Test for Shiga Prefecture Senior High School Admission Screening of Applicants may be viewed on the Shiga Prefectural Board of Education’s homepage.

(URL:<http://www.pref.shiga.lg.jp/edu/nyushi/>)

### (2) Special arrangements for entrance examinations of prefectural senior high schools

When students need special arrangements during the entrance examination, the “Application for Special Arrangements for foreign and returnee students” ( Kaigai Kikoku Sochinegai) is submitted to the school you wish to enter. Please consult the school through the class teacher for the special arrangements and considerations you need.

※ Who may avail of the “Application for Special Arrangements for foreign and returnee students” ( Kaigai Kikoku Sochinegai) ;

Returnees and foreign students who meet either of the following requirements:

- A. Period of stay in Japan: The period counting from the day of returning home (for returnees) or arriving in Japan (for foreigners) until the 1<sup>st</sup> February is less than 6 years. The period from returning home (for returnees) or landing in Japan (for foreigners) until the 1<sup>st</sup> February, 2018 is less than 6 years.
- B. Period of living abroad: The period of continuously living abroad before returning (for returnees) or coming (for foreigners) to Japan is more than 1 year.

Considerations and arrangement details: For entrance examination questions, Kanji characters may be written with Japanese Kana, examination time may be lengthened and dictionaries may be used for the purpose of translating foreign words to Japanese and vice-versa. ( You may bring up to 2 dictionaries, however, dictionaries in English are not allowed. )

## 7. Entrance Examination schedule (Junior High School 3rd year student) <example>

July	Parent-teacher-student meeting ( teacher, parents and student meeting)
August	Trial lessons held in senior high schools, etc.
Early September	Ability test (7 to 8 times per year)
October	Mid-term test
November	Final test
Mid-December	Prent-teacher-student meeting (Consultation on the choice of senior high school according to student's test results and interests)
Mid-January	Application on entrance examinations for Shiga prefectural schools
Late January	Application for "Referral selection"/ "Special selection" /"Referral selection in sports, culture and arts" in prefectural senior high schools
Early February	Private school entrance examination Private school entrance examination result notification. Screening for "Referral selection", "Special selection" and "Referral selection in sports, culture and arts" in prefectural senior high schools (admission screening)
Mid-February	Result notification of "Referral selection", "Special selection" and "Referral selection in sports, culture and arts" in prefectural senior high schools Application for "General selection" in prefectural senior high schools.
Late February	Amendments on prefectural senior high school applications (general selection)
Early March	Academic test in prefectural senior high schools (general selection, first round)
Mid-March	Notification of admission results Second application in prefectural senior high schools (only for certain schools which do not have their quota of students)
Late March	Second selection Second notification of admission results
Early April	Admission to senior high school

### 【Entrance examination terminology】

“Gansho” (Application form): a document for applying in an entrance examination

“Shiboukou” (School of one’s choice): The school which one would like to apply for.

“Shutsugan” (Application): handing-in of the the application form

“Chousasho” (personal evaluation report): A written document with record of academic performance, attendance and school activities (ex. committee membership or any awarded prize, etc.)

“Sengan” (Exclusive application): Application in only one school. Once the candidate in an exclusive application for private senior high schools passes the entrance examination, he/she has to go to that school. The chance of passing is more likely compared to that of “multiple application”.

“Heigan” (Multiple applications): Students could apply in more than one school.

- (1) However, application in more than one public/prefectural senior high school is prohibited, even if the school is located in another prefecture.
- (2) Except for candidates with referral for private senior high schools, those for both prefectural senior high school and private senior high school under “multiple applications” are eligible to take entrance examinations if the dates are different.

“Koukou taikennyugaku” (Trial lessons in senior high school and others): The trial usually takes place during summer holidays (August) or may be implemented on Saturdays or Sundays in the second semester.

### **「Parent-teacher-student meeting」**

Many schools hold a conference among the teacher, parent/guardian and student during July, December and February (February is for the 1st and 2<sup>nd</sup> year students only). During the meeting, the teacher, student and parent/guardian exchange opinions. The aim is to foresee the student's future, clarify current target and share understanding.

Career and further studies after junior high school graduation will become the main topic of the meeting after the student has been promoted to 3<sup>rd</sup> year. The discussion will focus on information about the senior high school/s that the student would like to apply to, and what the student must do in order to prepare for the senior high school entrance examinations.

Besides the parent-teacher-student meeting, it is possible to arrange a meeting with the teacher at any time upon request. Please consult with your junior high school as soon as possible if you have any concern.

### **8. School life in senior high school**

School year starts in April and ends in March. Various events are held by the school throughout the year, and parents may be asked to visit the school for some events like the Parents/Teachers Association. Moreover, school tours will be organized which require a certain amount of money. Details will be on the school's notice.

#### **【Examples of main school events held in a year】**

Semester 1: Opening ceremony, entrance ceremony, medical check-up, physical examination, field trips, parent-teacher-student meeting, regular tests, closing ceremony, summer vacation

Semester 2: Opening ceremony, Field day, School festival/ Study presentation, parent-teacher-student meeting, regular tests, closing ceremony, winter vacation

Semester 3: Opening ceremony, school tour, parent-teacher-student meeting, regular test, graduation ceremony, closing ceremony, spring vacation

- ※ Most of the schools have a 3-semester system, although there are schools with a 2- semester system (first term and last term).
- ※ In case of a poor academic performance and low attendance rate, there is a possibility of not being able to get promoted to the 2<sup>nd</sup> year or 3<sup>rd</sup> year. Remaining in the same grade for another year is called “Ryuunen” (repeating a year).

~A standard day in a senior high school~ (An example for a full-time school)

The school starts at 8:30 am. There are 4 lessons in the morning (50 minutes per lesson) and 2 more after lunch. There are 6 lessons every day. Each subject is taught by a different teacher. Students may join his/her favorite sport or cultural club activities after school. Students are free to join a club of their choice. No meals will be provided during lunch, therefore students have to bring their own lunchboxes or have lunch in the canteen (for schools with canteen). Most schools require students to wear uniforms.

### **9. Others**

Employment: There are various ways to get a job

Jobs can be found through schools supported by\* “Hello Work” (a public job placement center)

\*\*“Hello Work” is a place where people can find jobs. The center also arranges job consultation services.

(Some “Hello Work” centers provide consultations in Portuguese and Spanish)

Think about and discuss your future with your teachers and your parents (guardians)!

 **I am not sure which path to take after graduation from junior high school.**

After graduating from junior high school, there are various institutions to continue your study: senior high schools, technical schools (Senmon gakko), advanced technical schools (Senshu gakko), independent vocational schools (Kakushu gakko), vocational schools (Shokugyo gakko), part-time high schools (Teiji-sei) and correspondence schools (Tsushin-sei). Actively attend orientations, school tours and entry trials to collect more information. Think about what you want to do, what you are good at and the skills you have. Consult with your teachers and family to make the final decision. You may use the reference materials below:

\* 「Yume no Sekkeizu」 (Shiga Prefectural Board of Education secretariat, Senior high school division)

Language: Japanese <http://www.pref.shiga.lg.jp/edu/gakko/yume/sekkeizu.html>

Language: Portuguese/Spanish/Chinese [http://www.pref.shiga.lg.jp/edu/gakko/yume/yume\\_sankakoku.html](http://www.pref.shiga.lg.jp/edu/gakko/yume/yume_sankakoku.html)

\* 「Mirai no tame no shinro guidance- Academic/career guidance」 (SIA)

Language: Portuguese/Spanish/Chinese/English <http://www.s-i-a.or.jp/gaikokuseki/mirai/index.html>

 **I would like to become a nurse. What should I do?**

There are various paths you may choose from. One is to go to a technical school or advance technical school after graduating from middle school. Another may be to go to a nursing school, college for nursing or junior college for nursing after graduating from high school. Either way, you must pass the National Certification Examination for Nursing. There are schools for nursing in Shiga. Please consult with your teachers.

 **I did not graduate from junior high school, but I would like to go to senior high school.**

The national government offers a certification exam once a year to determine if your academic skills are equivalent to a junior high school graduate's level. If you pass this exam, you may be certified as a junior high school graduate and may enter senior high school. Regardless of nationality, you may take this exam as long as you are 15 years or older by the end of the calendar year.

Junior High School Graduation Certification Exam: 10/26 (Thu.) at Piazza Ohmi Rm.202.

Applications accepted between 8/21/2017~9/8/2017 (Mailed applications with a post mark until 9/8/2017 is accepted.)

For details: Shiga Prefectural Board of Education secretariat, Pre-school, Elem. & Junior high school division.  
TEL 077-528-4665

 **I would like to learn a technical skill such as welding and work as soon as I can.**

Shiga Vocational Training Center (Techno-college), a school for vocational skill development, offers one-year courses, with a condition that one should start working after completion of the class. Courses offered include: welding, costume design, painting, wooden architecture, and metal processing. Please consult with your teachers.

 **I would like to study while working at the same time.**

Part-time high school or correspondence courses may be your choice. Daytime or night-time classes are available in part-time schools. Correspondence classes require you to prepare reports at home during the weekdays and attend classes on weekends. This type of school may have the academic year or credit-based system. Please consult with your teachers.

 **I cannot continue with my schooling due to economic reasons.**

You may take advantage of various financial aid programs to support paying for your tuition. Some of these programs are: Shiga financial aid (Shiga-ken Shogaku Shikin), Mary St. Joseph financial aid, individual organization-supported programs and local government-supported programs.

If you are in serious need of financial support, please consult with your school, other institutions or the Shiga Board of Education. Applying for an educational loan from non-governmental firms may be another option.

# Resources

## 1. Subjects in Prefectural Senior High Schools

**\*“Dream Plans – Introduction to the aspects of Shiga Prefectural Public Senior High Schools” (By School Education Section of Shiga Prefectural Board of Education)**

## 2. Admission screening of applicants for individual senior high schools in Shiga prefecture

\* Admission screening of applicants for individual senior high schools in Shiga prefecture (By School Education Section of Shiga Prefectural Board of Education)

## 3. Private and other Senior High Schools and Technological Schools in Shiga Prefecture

## 4. Locations of Junior High Schools in Shiga prefecture

**\* 3&4: “The life of junior high school students and their future course” by future course counseling section of the Education Research Department of Shiga Prefecture’**

## 5. List of local consultation counters in Shiga prefecture

## 6. List of Japanese classes in Shiga prefecture

# School Subjects in Prefectural Senior High Schools

## 1. Regular courses

### (1) Characteristics of Regular Courses

- General education...Raises the overall educational level, aiming at nurturing basic knowledge to cope with one's future career and studies.
- Contents ...Focuses on general subjects. However, some schools have specialized subjects  
General subjects : Japanese, Geography and History, Civics, Mathematics, Science, Health and Physical Education, Arts, Foreign Languages, Home Economics and Information
- Type...There are courses on "Humanities" focusing on Japanese and Social Sciences; "Science course" focuses on Mathematics and Science; students may study according to their own preferences.
- Study based on proficiency...For subjects such as Mathematics and English, some schools organize study programs according to the student's individual proficiency.

### (2) Courses related to general education

Some schools organize educational courses according to the student's ability and their aptitude to cope with the needs of their future career and studies.

- Physical Education course • • **【Ibuki】 【Echi】 【Minakuchi】**
- International Culture course • • **【Kitaotsu】 【Minakuchi】**
- English course • • • • • **【Maibara】**
- Music course • • • • • **【Echi】**
- Welfare and Health course • • • **【Ishibe】**
- SS (Super Science)course • • • **【Hikone higashi】**

## 2 Specialized courses

- Specialized courses are designed according to the students' individual interests and concerns aiming at maximizing their characteristics respectively.
- Apart from regular subjects; students can gain specialized knowledge and skills.

### (1)Agricultural subjects

Agriculture ...	• Includes subjects concerning the rearing management of farm animals and pet animals; cultivation management, distribution and sales of crops; and operation of large machineries <b>【Nagahama Nougyo】</b>
	• Basic knowledge and techniques for producing agricultural commodities <b>【Konan Nougyo】</b>
	• Cultivation of rice, vegetables, fruits and flowers; rearing of farm animals; biotechnology; and farm management <b>【Yokaichi-Minami】</b>
Food Technology ...	Includes subjects concerning the manufacture, distribution and sales of processed agricultural and livestock products <b>【Nagahama Nougyo】 【Konan Nougyo】 【Yokaichi-Minami】</b>
Horticulture ...	Includes subjects concerning production, distribution, and use of vegetables, fruits and flowers <b>【Nagahama Nougyo】</b>
Flower and Greenery ...	Includes subjects concerning the basic knowledge and techniques for production, sales and use of flowers and trees <b>【Konan Nougyo】</b>
Landscape Design ...	Includes subjects concerning the basic knowledge on environmental-conscious designs for urban planning and regional development; surveying and landscaping techniques <b>【Yokaichi-Minami】</b>



## (2) Industrial subjects

Course on Mechanics ...Includes basic information and skills in the machine industry, actual practice in the machine industry, site operation, supervision and management  
**【Hikone Kougyo】 【Hachiman Kougyo】 【Seta Kougyo】**  
**【Hikone Kougyo (Part-time)】**

Course on Electricity...Includes subjects in generation, transmission, the use and principles of electricity; electricity-related businesses (manufacturing, management, operation, maintenance, technical services, etc.); electricity-saving; mechanisms of computers and computer programs; technical innovations including mechatronics (controlling machines with computers); and information technology (data communications, etc.)  
**【Hikone Kougyo】 【Hachiman Kougyo】 【Seta Kougyo】**

Chemical Engineering ...  
Includes biotechnology, operation, management, research and technical services of facility devices in chemical factories and chemical-related fields  
**【Seta Kougyo】**

Construction and Facilities ...  
Includes design, construction techniques of buildings, such as wooden houses, high-rise buildings; also includes facility-related work such as those related to air-conditioning equipments, water supply and drainage, hygienic facilities of buildings, disaster prevention devices, roads, bridges, and railways.  
**【Hikone Kougyo】**

Environmental Chemistry ...  
Includes the study on environmental analysis and preservation, production, experiments on recycling, and experiments on biotechnology.  
**【Hachiman Kougyo】**

Mechanical and Electrical courses...  
Includes the study of the basic knowledge and techniques related to machineries and electricity; machine production techniques; and electrical construction management techniques  
**【Seta Kougyo (Part-time)】**

## (3) Commerce Subjects

Commerce ... The scope of study includes marketing and business management; clerical work techniques, the use of information apparatus and word processors  
**【Hachiman Shougyo】**

Information Processing ...Includes clerical work training and the use of computers, data processing and programming techniques  
**【Hachiman Shougyo】**

International Economics ...Includes subjects relevant to economics, culture and languages of foreign countries; leadership ability and creativity in the international society  
**【Hachiman Shougyo】**

Comprehensive Business ...Includes knowledge and techniques covering a wide range of business activities, and also distribution, accounting, information and international society related matters  
**【Otsu Shougyo】**

Information System ...Includes the study on data collection, analysis, processing and transmission by means of computers and IT (information communication technology ) techniques  
**【Otsu Shougyo】**

(4)Home Economics

Home Economics ... Includes subjects relevant to family life and its related occupations and industries, fashion and cooking <b>【Otsu】</b>
--

(5)Science and Mathematics

Science and Mathematics ... Includes subjects relevant to the advanced knowledge of natural sciences and mathematics aiming at nurturing the ability on scientific observation and creativity. <b>【Maibara】 【Zeze】</b>
---

(6)Physical Education

Physical education ... Includes subjects on advanced specialized physical training and motion skills <b>【Kusatsu Higashi】</b>
---

(7)Music

Music ... Includes studies on the basic knowledge and skills for a musical professional. <b>【Ishiyama】</b>
--

(8)Fine Arts

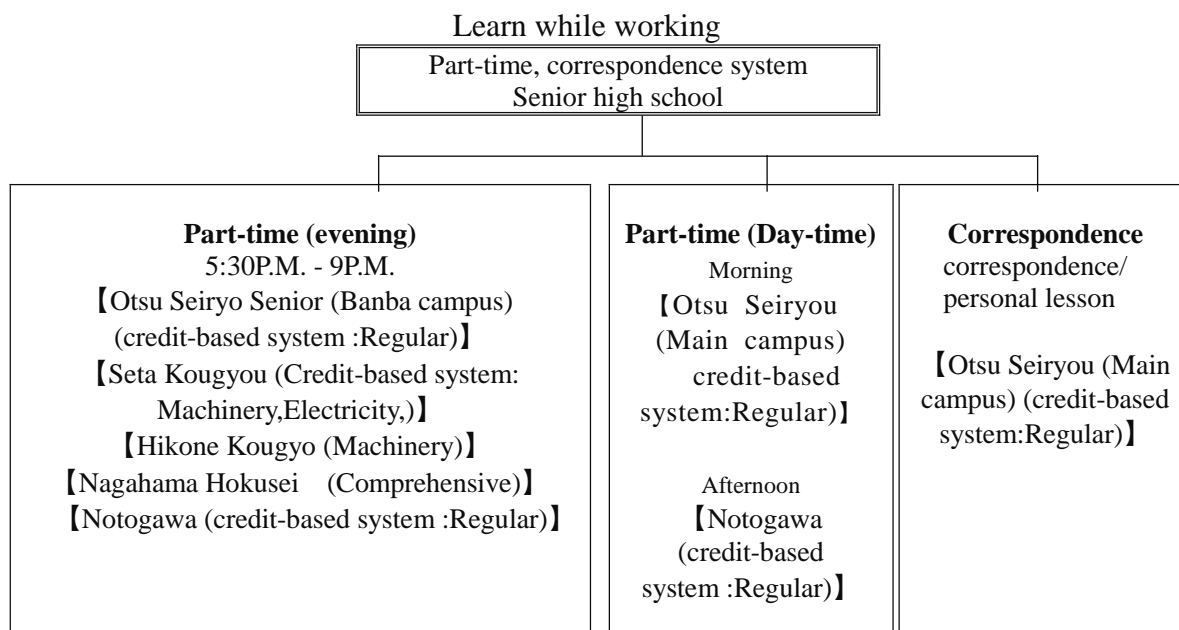
Arts ... Includes studies on the basic and specialized knowledge and skills in arts <b>【Ritto】</b>
---

### 3 Comprehensive subjects

Students are free to choose the subjects they prefer through a comprehensive course of both general and specialized subjects wherein they can obtain specialized knowledge systematically to cope with their future needs.

**【Nagahama Hokusei】 【Hikone shousei-kan】 【Kokusai Jouho】 【Adogawa】 【Hino】 【Konan】 【Shigaraki】**

## 4 Part-time and Correspondence Education



Part-time schools: Schools for individuals who want to study while working and advance to new goals. A part-time system of both daytime and evening lessons are available. As long as the students acquire all the credits required in 3 years, a graduation certificate for senior high school will be granted. The part-time system in senior high schools was established with the aim of promoting the opportunity for the working youths to study.

Correspondence courses : There are no screening tests for admission. The courses are established to provide a high school education opportunity to those who cannot attend regular schools because of family, work or personal reasons. One may acquire the equivalent qualifications of a high school graduate by studying for 3 years or more or earning the number of credits required. During these period, education is carried out in 3 ways: submission of school reports, schooling (personal instruction) and taking tests. The system aims to provide better job opportunities for working youths.

[attached table]

Admission screening of applicants for individual high schools (Full time courses)

Schools	Courses	Subjects	By referral			Special selection					Referral selection in sports, culture and arts							General selection					Remarks								
			Admission %	Interview	Essay writing	Practical test	Admission %	Tests			Academic test score	Personal evaluation report	Admission (Number of people)	Tests					Academic Tests												
								Oral test	Short Essay	Practical test				General questj	Sports activities and Cultural and artistic	Interview	Essay writing	Practical test	Aptitude test	Short essay	General questj	Japanese		Mathematics	Social studies	Science	English	Interview	Essay writing	Practical test	Academic test score
Zeze	Full time	Regular				30					7 : 3									100	100	100	100	100						7 : 3	
		Science & Mathematics				50					7 : 3									100	120	100	120	100						7 : 3	
Katata	Full time	Regular	30									5								100	100	100	100	100						5 : 5	
Higashi Ōtsu	Full time	Regular				30					7 : 3									100	100	100	100	100						7 : 3	
Kita Ōtsu	Full time	Regular	30																	100	100	100	100	100						5 : 5	
Ōtsu	Full time	Regular				25					6 : 4	3								100	100	100	100	100						7 : 3	
		Home Economics	40									3								100	100	100	100	100						7 : 3	
Ishiyama	Full time	Regular				30					7 : 3									100	100	100	100	100						7 : 3	
		Music				50					7 : 3									100	100	100	100	100		100				7 : 3	
Seta Kōgyō	Full time	Industrial	50																100	100	100	100	100						5 : 5		
Ōtsu Shōgyō	Full time	Comprehensive	50								10								100	100	100	100	100						6 : 4		
Hikone higaishi	Full time	Regular				30					7 : 3									100	100	100	100	100						7 : 3	
Kawase	Full time	Regular				25					7 : 3		5							100	100	100	100	100						7 : 3	
Hikone Kōgyō	Full time	Industrial	50																100	100	100	100	100						5 : 5		
Hikone Shōseikan	Full time	Comprehensive	40								10								100	100	100	100	100						7 : 3		
Nagahama Kita	Full time	Regular				30					6 : 4									100	100	100	100	100						7 : 3	
Torahime	Full time	Regular				30					6 : 4		3							100	100	100	100	100						7 : 3	
Ika	Full time	Regular	30								8								100	100	100	100	100						5 : 5		
Nagahama Nōgyō	Full time	Agriculture	50																100	100	100	100	100						5 : 5		
Nagahama Hokusei	Full time	Comprehensive	40								4								100	100	100	100	100						5 : 5		
Hachiman	Full time	Regular	30																100	100	100	100	100						7 : 3		
Hachiman Kōgyō	Full time	Industrial	50								17								100	100	100	100	100						6 : 4		
Hachiman Shōgyō	Full time	Commerce	50								6								100	100	100	100	100						5 : 5		
Kusatsu Higashi	Full time	Regular				30					6 : 4									100	100	100	100	100						7 : 3	
		Physical Education	85									20								100	100	100	100	100		90				6 : 4	
Kusatsu	Full time	Regular	30																100	100	100	100	100						6 : 4		
Tamagawa	Full time	Regular				30					6 : 4									100	100	100	100	100						7 : 3	

- (Notes)
- The admission quota (%) for Selection by Referral and Special Selection includes the number of admission for Selection by Referral in Sports, Culture and Arts.
  - The ratio of academic test scores to personal evaluation report are only approximate figures.
  - Figures under the columns of interview, essay writing and practical test show the perfect scores.
  - ※: If the second option is Music in Ishiyama High School, a practical test must be taken.

Schools	Courses	Subjects	By referral			Special selection					Referral selection in sports, culture and arts							General selection					Remarks								
			Admission %	Interview	Essay writing	Practical test	Tests			Admission (Number of people)	Tests				Academic Tests																
							Admission %	Oral test	Short Essay		Practical test	General question	Academic test ..	Personal evaluation report	Sports activities Cultural and artistic activities	Interview	Essay writing	Practical test	Aptitude test	Short essay	General questions	Japanese		Mathematics	Social studies	Science	English	Interview	Essay writing	Practical test	Academic test ..
Konan Nōgyō	Full time	Agriculture	50	○												100	100	100	100	100	100	50					5 : 5				
Moriyama	Full time	Regular					30	○	○								100	100	100	100	100							7 : 3			
Moriyama Kita	Full time	Regular	30	○	○												100	100	100	100	100							5 : 5			
Ritto	Full time	Regular	30	○										12		○		○											5 : 5		
		Arts	75			○									3	○		○								100				6 : 4	
Kokusai Jōhō	Full time	Comprehensive	40	○	○												100	100	100	100	100							6 : 4			
Minakuchi	Full time	Regular	30	○	○									7			○		○										6 : 4		
Minakuchi Higashi	Full time	Regular					30	○	○									100	100	100	100	100						5 : 5		7 : 3	
Kōnan	Full time	Comprehensive	40	○														100	100	100	100	100	50						5 : 5		
Shigaraki	Full time	Comprehensive	40	○												5	○		○											5 : 5	
			☆																												
Yasu	Full time	Regular	30	○										10		○		○											5 : 5		
Ishibe	Full time	Regular	30	○														100	100	100	100	100							5 : 5		
Kōsei	Full time	Regular	30	○														100	100	100	100	100							7 : 3		
Takashima	Full time	Regular	25	○	○													100	100	100	100	100							6 : 4		
Adogawa	Full time	Regular	30	○														100	100	100	100	100							6 : 4		
		Comprehensive	30	○															100	100	100	100	100						6 : 4		
Yōkaichi	Full time	Regular					30	○	○									100	100	100	100	100							7 : 3		
Notogawa(Credit-based system)	Full time	Regular	25	○														100	100	100	100	100							6 : 4		
Yōkaichi Minami	Full time	Agriculture	50	○											3		○		○											5 : 5	
Ibuki	Full time	Regular	30	○											10		○		○											5 : 5	
Maibara	Full time	Regular					30	○	○										100	100	100	100	100						7 : 3		
		Science & Mathematics					50	○	○											100	100	100	100	100						7 : 3	
Hino	Full time	Comprehensive	40	○											5		○		○											6 : 4	
Echi	Full time	Regular	30	○															100	100	100	100	100	100					5 : 5		

(Notes) • The admission quota (%) for Selection by Referral and Special Selection includes the number of admission for Selection by Referral in Sports, Culture and Arts.  
• The ratio of academic test scores to personal evaluation report are only approximate figures.  
• Figures under the columns of interview, essay writing and practical test show the perfect scores.  
☆ Category for applicants nationwide (Up to five students) of comprehensive subject of Shigaraki High School

Admission screening of applicants for individual high schools (Part-time and Correspondence Courses)

Schools	Day time/evening and correspondence courses	Subjects	By referral				Special selection				Referral selection in sports, culture and arts						General selection						Remarks									
			Admission %	Interview	Essay writing	Practical test	Admission %	Tests			Academic test	Personal evaluation report	Admission (Number of people)	Tests					Academic Tests													
								Oral test	Short Essay	Practical test				General question	Sports activities Cultural and artistic	Interview	Essay writing	Practical test	Aptitude test	Short essay	General question	Japanese		Mathematics	Social studies	Science	English	Interview	Essay writing	Practical test	Academic test	Personal evaluation report
Ōtsu Seiryō (Correspondence course)	Day time	Regular															100	100	100	100	100	100					6	:	4			
	Evening	Regular															100	100	100	100	100	100					6	:	4			
	Correspondence	Regular															-	-	-	-	-	○					#0	:	10			
Seta Kōgyō (Correspondence course)	Evening	Industrial															100	100	100	100	100								5	:	5	★
Hikone Kōgyō	Evening	Industrial															100	100	100	100	100								5	:	5	★
Nagahama Hokusei	Evening	Comprehensive															100	100	100	100	100								5	:	5	★
Notogawa (Correspondence course)	Day time	Regular	25	○													100	100	100	100	100								6	:	4	
	Evening	Regular															100	100	100	100	100								6	:	4	

- (Notes)
- The admission quota (%) for Selection by Referral and Special Selection includes the number of admission for Selection by Referral in Sports, Culture and Arts.
  - The ratio of academic test scores to personal evaluation report are only approximate figures.
  - Figures under the columns of interview, essay writing and practical test show the perfect scores.
  - # No academic tests required.
  - ★ Special admission for part-time courses available.

## Private and other senior high schools and technical schools in Shiga

Private senior high schools (full time) (prescribed number of students for 2017)

School name	Subjects	Prescribed number of students	Location	Nearest station
Hieizan	Regular	400	4-3-1 Sakamoto, Otsu -shi	Keihan Otsu station. JR Hieizan-Sakamoto
Shigatankidaigaku Fuzoku	Regular	200	1-18-1 Asahigaoka Otsu-shi	JR Otsu station
	Comprehensive Humanities	80		
Kosen	Regular	350	178 Noji-cho , Kusatsu -shi	JR Minami Kusatsu stn.
Omi	Regular	240	3511-1 Daikokumae, Matsubara-cho, Hikone-shi	JR Hikone station
	Business	160		
Omi Kyodai- sha	Regular	320	177 Ichii-cho, Omihachiman-shi	JR Omihachiman stn.
	International Communications	(including credit-based system)		
		35		
Shiga Gakuen	Regular	310	520-1, Takebekita-cho, Higashiomi-shi	Omi tetsudo Kawabe no Mori stn.
Shiga Sogo	Comprehensive	210	328, Serikawa-cho, Hikone-shi	JR Hikone station
Ritsumeikan Moriyama	Regular	320	250, Miyake-cho, Moriyama shi	JR Moriyama station
Ayaha	Regular	80	1-18-1, Nishishibukawa, Kusatsu -shi	JR Kusatsu station
	Caregiving and Welfare	40		
Happy Science Academy Kansai	Regular	100	2-16-1, Ouginosato-higashi, Otsu-shi	JR Ogoto-Onsen station

\*The no.of students at Shiga Gakuen High School and Ritsumeikan Moriyama High School includes those from their attached junior high schools.

Private Senior High Schools (Part-time system) (prescribed number of students for 2017)

School name	Subjects	Prescribed number of students	Day/ Evening	Location	Nearest Station
Ayaha	Regular	120	Day time	1-18-1,Nishi-shibukawa, Kusatsu -shi	JR Kusatsu station.
	Food processing	40	Day time		

Correspondence, Credit-based Senior High Schools (prescribed number of students for 2017)

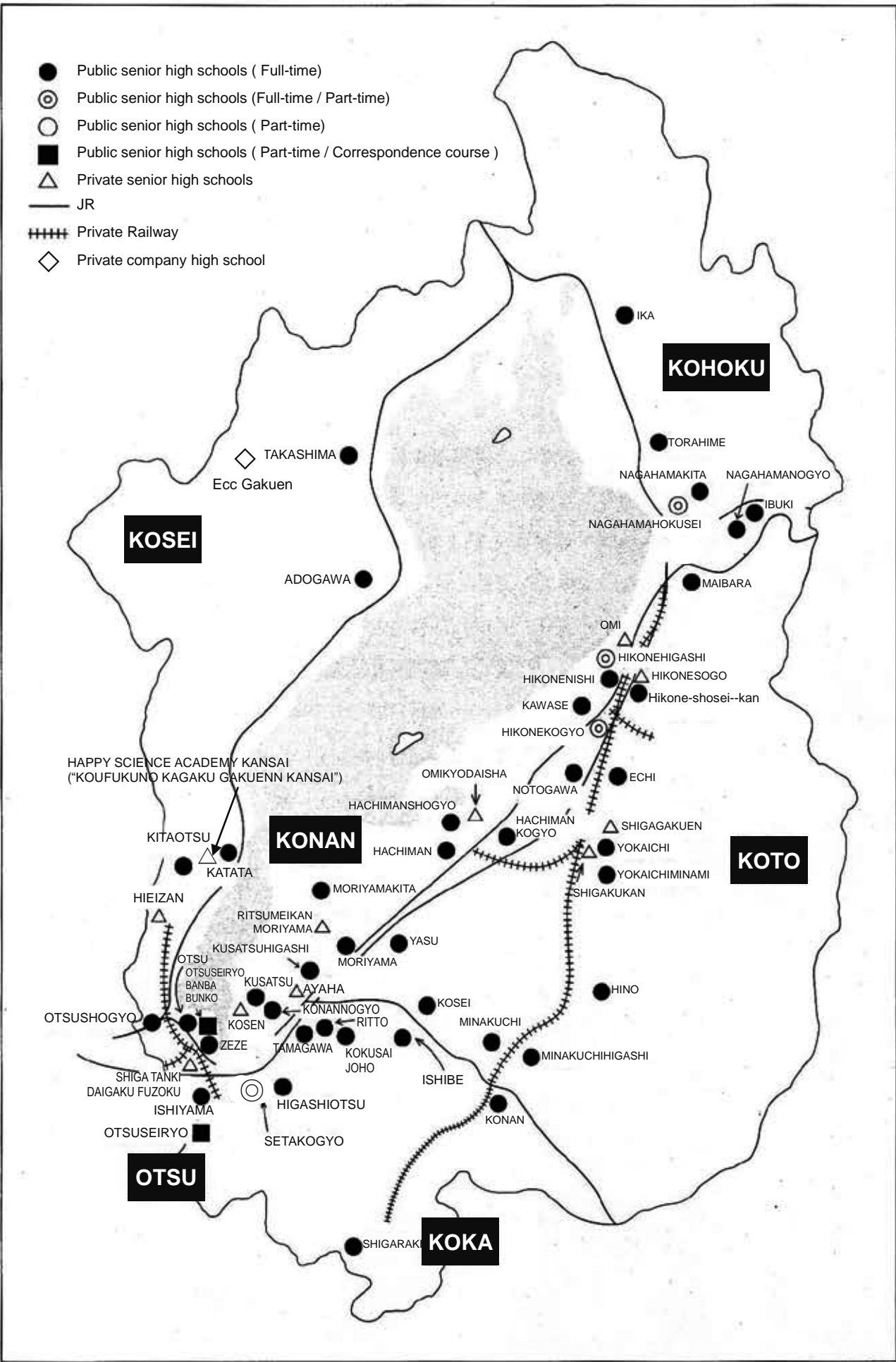
School name	Subjects	Prescribed number of students	Location	Nearest Station
Otsu Seiryō	Regular	320	1-14-1,Ohira, Otsu-shi	JR Ishiyama station
Ayaha	Regular	105	1-18-1,Nishishibukawa, Kusatsu-shi	JR Kusatsu station
Shigakukan	Regular	120	2-30, Nonomiya-cho, Higashiomi-shi	Omi tetsudo Yokaichi stn.
ECC Gakuen	Comprehensive	---	512-1, Mukugawa, Imazu-cho, Takashima-shi	JR Omi-imazu stn..

Public Industrial Senior Technical Schools (Nearby prefectures)

School name	Subjects	Location
Maizuru	Mechanical engineering, Electrical Information engineering, Construction System engineering, Electronic Management engineering, Electrical and Control System engineering, Civil and Industrial System engineering	Maizuru city, Kyoto Prefecture
Nara	Mechanical engineering, Electrical engineering, Chemical Resources engineering, Information engineering, Electronic Management engineering	Yamatokooryama city, Nara Prefecture
Gifu	Mechanical engineering, Electrical Information engineering, Environmental Urban engineering, Architecture, Electronic Management engineering	Motosu city, Gifu Prefecture
Suzuka	Mechanical engineering, Electrical and electronic engineering, , Applied Biological Chemistry, Material engineering, Electronic Information engineering	Suzuka city, Mie Prefecture
Fukui	Mechanical engineering, Electrical and electronic engineering, Material engineering, Environmental Urban engineering, Electronic Information engineering	Sabae city, Fukui Prefecture

# Location of senior high schools in Shiga

- Public senior high schools ( Full-time )
- ⊙ Public senior high schools ( Full-time / Part-time )
- Public senior high schools ( Part-time )
- Public senior high schools ( Part-time / Correspondence course )
- △ Private senior high schools
- JR
- ≡≡≡ Private Railway
- ◇ Private company high school







When you're in trouble...



## Interpretation\*Consultation Desks for Foreign Residents in Shiga

Area	Consultation Desk	Language(s)	Consultation Schedule	Contact Info.
Otsu	City hall (Kokusai Koryu-shitsu)	Portuguese, Spanish, English, Chinese, Korean, etc.	Mon~Fri 8:40~17:25	email: otsu1023@city.otsu.lg.jp FAX: 077-525-8755
	Otsu Int'l. Goodwill Association (Otsu-shi Kokusai Shinzen Kyokai)	Japanese (interpreter required)	2nd Wed 17:30~19:30 (by appointment)	077-525-4711
Hikone	City hall (Sogo-annai)	Portuguese	1st - 3rd Thu 8:30~19:00 Mon~Fri (except for the above) 8:30~17:15	0749-30-6113
		English	Mon~Fri 8:30~17:15	
		Chinese	Tue, Fri 8:30~17:15	
Nagahama	City hall (Shimin-ka)	Portuguese	Mon~Fri 8:30~17:15	0749-65-8711
		Spanish	Mon, Tue, Fri 8:30~15:30	
		English	Mon, Wed, Fri 9:00~16:00	
	Nagahama Int'l. Friendship Assn. (Nagahama Shimin Kokusai Koryu Kyokai)	Portuguese	Tue 10:00~17:00 Wed, Sat 13:00~17:00	0749-63-4400
English	Tue, Wed, Fri, Sat, Sun 10:00~19:00			
Omihachiman	City hall (lobby)	Portuguese, English	Mon~Fri 9:15~16:30	0748-26-7092
Kusatsu	Kusatsu Int'l. Friendship Assn. (Kusatsu-shi Kokusai Koryu Kyokai)	Portuguese	2nd - 4th Thu 9:00~11:00	077-561-2322
		English	Mon~Fri 8:30~17:15	
	City hall (Shimin-ka)	Chinese	Mon~Fri 8:30~17:15	077-561-2344
Moriyama	City hall (Sodan-shitsu)	Portuguese (Please make an appointment for other languages).	1st - 3rd Thu 9:30~11:30	077-583-4653
Ritto	Ritto Int'l. Friendship Association (Ritto Kokusai Koryu Kyokai)	Portuguese	Wed 13:00~17:00	077-551-0293
Koka	City hall (Seikatsu Kankyo-ka)	Portuguese, Spanish		0748-69-2146
	(Shakai Fukushi-ka)	Portuguese	Mon~Fri 8:30~17:15	0748-69-2155
	Chiiki Community Suishin-ka	English		0748-69-2114
Yasu	Yasu International Association (Yasu-shi Kokusai Kyokai)	English, Spanish	Mon~Fri 9:00~17:00	077-586-3106
		Portuguese, Chinese	Irregular sched. (by appointment)	
Konan	Higashi Chosha	Portuguese	Mon~Fri 8:30~17:15	0748-72-1290
	Nishi Chosha (Jinken Kyoiku Keihatsu-shitsu)	Portuguese	Mon~Fri 8:30~17:15	0748-77-8511
	Konan International Association (Konan-shi Kokusai Kyokai)	Portuguese	Mon~Fri 8:30~17:00	0748-71-4332
Takashima	Takashima International Assn. (Takashima-shi Kokusai Kyokai)	English	Irregular sched. (by appointment)	0740-20-1180
Higashiomi	City hall (Shinkan) Shimin Seikatsu Sodan-shitsu	Portuguese	Mon~Fri 9:15~12:00 13:00~16:30	0748-24-5521
Maibara	Santo Chosha (Santo Jichi Shinko-ka)	Portuguese	Mon~Fri 8:30~17:15	0749-55-2650
	Maibara Multicultural Friendship Assn. (Maibara-shi Tabunka Kyosei Kyokai)	Portuguese	Tue~Fri 13:15~17:15	0749-56-0577
		Chinese	Mon~Thu 9:00~15:00	
Hino	Town office (Jumin-ka)	Portuguese	Mon, Wed, Thu 8:30~17:15	0748-52-6571
Aisho	Echigawa Chosha Jumin-ka · Sogo seisaku-ka	Portuguese	Mon~Wed, Fri 9:00~17:15	0749-42-7684
		Spanish, English	Mon, Tue, Thu, Fri 8:30~17:15	
Shiga	Shiga Intercultural Association for Globalization (Shiga-ken Kokusai Kyokai)	Portuguese, Spanish	Mon~Fri	10:00~17:00 077-523-5646
		Tagalog, English	Mon~Thu	

# Japanese Language Classes in Shiga



Area	Group Name		Contact info.	Class Schedule	Venue
Otsu	Otsu International Goodwill Association Nihongo Class		077-525-4711	Fri 13:00~14:45, 19:00~20:45	Asuto Hamaotsu 2F
				Fri 19:00~20:45	Seta Shimin Center
				Fri 19:00~20:45	Seta-higashi Shimin Center
				Thu 10:00~11:45	Katata Shimin Center
	Nihongo no kai		090-6609-3191	Thu 10:00~12:00	Otsu Kominkan
Omi Nihongo Fureai Club		077-523-1061	Mon 10:30~12:00	Piazza Ohmi 2F	
			Sat 19:30~21:10	Seta-kita Kominkan	
Hikone	Hikone International Assn. Nihongo Kyoshitsu		0749-22-5931	Wed 19:00~20:30 (Mar~Nov)	Hikone Shimin Kaikan 2F
	Hikone Nihongo Kyoshi-kai WAJT		0749-23-7833	2nd Sat 10:00~12:00	AI Plaza Hikone 6F
	Nihongo Kyoshitsu Smile		0749-24-7241	Sun 10:00~11:30	Hikone Nishi-chiku Kominkan
			070-5661-7345	Mon~Fri ① 10:00~11:30 ② 13:30~15:00 ③ 15:30~17:00	Innovation Office Nayashichi
Hikone Kokusai Koryukai VOICE Nihongo Kyoshitsu		0749-46-1294 090-7718-5250	Sat 14:00~16:00	Hikone Naka-chiku Kominkan	
Nagahama	Nagahama UNESCO Kyokai Nihongo Kyoshitsu		0749-65-6552	Wed, Sat 19:00~20:30	Kokusai Bunka Koryu House GEO
	Tanoshii Nihongo		0749-63-4400	Tue 19:00~20:30	
Omi-hachiman	Nihongo Koryu Kyoshitsu Tampopo	Kaneda Kyoshitsu	0748-26-7092	Sat 19:00~21:00	Kaneda Community Center
		Azuchi Kyoshitsu			Azuchi Community Center
		Kitasato Kyoshitsu			Kitasato Community Center
Kusatsu	Olive		077-565-9215	Sat 19:00~20:40	Kusatsu-shiritsu Machizukuri Center
	SHIPS Nihongo Kyoshitsu		077-561-5110	Wed, Fri 10:30~12:00	Tabunka Kyosei Shien Center
	Kusatsu International Friendship Association	Nihongo Kyoshitsu Kizuna	077-561-2322	Sat 10:20~12:00	Ritsumeikan Univ. BKC
		Yasashii Nihongo Salon		Tue 10:00~12:00 3rd Fri 18:30~20:00	Kusatsu Shimin Koryu Plaza UDCBK
Moriyama	Moriyama Nihongo Kyoshitsu		077-583-4653	1st & 3rd Sat 10:00~11:50	Moriyama Shimin Koryu Center
Ritto	RIFA Nihongo Kyoshitsu		077-551-0293	2nd & 4th Sat 10:15~11:45	Wing Plaza 3F
Koka	Koka International Exchange Assn.	Nagomi	0748-63-8728	Sat 19:30~21:30	Minakuchi Chuo Kominkan
		Niji		Mon 14:00~16:00	Jishu Katsudo Center Kizuna
Yasu	YIFA Nihongo Kyoshitsu		077-586-3106	* Consult with the teacher.	Yasu Int'l. Association (opisina)
Konan	Konan International Association Nihongo Kyoshitsu		0748-71-4332	(daytime) Consult with the teacher.	Chuo Machizukuri Center
	Camiyando		090-1338-3350	(night-time) Sat 19:00~20:30 Mon, Wed 19:00~21:00	Mito Machizukuri Center ERUDI
Takashima	Takashima International Assn. Nihongo Kyoshitsu		0740-20-1180	* Consult with the teacher.	
Higashiomi	Yokaichi Nihongo Kyoshitsu Volunteer Group		0748-22-6714	Sun 13:30~15:00	Higashiomi International Friendship Association
				Tue 10:00~11:30	
				Sat 19:00~20:30	
Clube Da Amizade		090-2193-2006	Sat 19:00~20:30	Notogawa Community Center	
Maibara	Maibara-shi Nihongo Kyoshitsu		0749-56-0577	Sat 9:00~10:30	Maibara Kominkan
				Sat 9:30~11:00	Maibara Shimin Koryu Plaza, Santo Kominkan
Aisho	Aisho-cho Nihongo Kyoshitsu		0749-42-7684	Mon 10:00~11:30	Echigawa-chosha
	Aisho Int'l. Friendship Assn. Volunteer Nihongo Kyoshitsu		070-5593-1769	Tue~Sun * Consult with the teacher.	Echigawa Kominkan

## Learning / Playing Groups for Children

A new school year is coming. Let's study and play with enthusiasm! In Shiga, there are various groups where children of foreign nationalities can study, play and eat meals together.



Name of Group	Details	Venue	Date / Time	Inquiries
Japanese Language Class for Children ( <i>Kodomo no tame no Nihongo kyoshitsu</i> )	Supports learning, pre-school children, leisure activities (from 4 y.o. to 6 <sup>th</sup> grade in elem. school)	Nagahama City International Cultural Friendship House "GEO"	Saturday 15:00 - 16:00	Nagahama International Friendship Association (NIFA) Tel. 0749-63-4400 nifa_info@ybb.ne.jp
Hikone UNESCO Association (Japanese Language Class for Children)	Learning support, Japanese language learning	University Satellite Plaza Hikone (AI Plaza Hikone 6 <sup>th</sup> flr.)	Sunday 10:00 - 16:00	Hikone UNESCO Association Tel. 0749-24-7974
World Amigo Club	Learning support, Japanese language training, providing a place where children can stay	Omihachiman City Kaneda Community Center	Saturday 10:00 - 12:00 summer vacation (4x) winter vacation (once)	Tel. 080-3834-8095 world.amigo.club@gmail.com
Kan-chan no chiisana ie ( <i>"Kan-chan's little home"</i> )	Consultations about learning, learning support	Omihachiman City Kan-chan no chiisana ie	Upon request	Tel. 090-3708-3315 srmq61299@nike.eonet.ne.jp
Higashiomi Amigo Kyoshitsu	Japanese language learning, learning support, Japanese culture	Higashiomi City Heart-pia, Yokaichi City	Saturday 14:00 - 16:00	School Support Regional Headquarters (Lifelong Learning Division, Higashiomi City Board of Education) Tel. 0748-24-5672
Classes on South American Languages <i>Camino Kyoshitsu</i> <i>Caminho Kyoshitsu</i>	Native language classes: 1. Spanish, 2. Portuguese	Konan City Mito Machizukuri Center	Saturday (1) 10:30 - 12:00 (2) 9:30 - 11:30 11:30 - 13:00	Konan International Association Tel. 0748-71-4332
Camiyando	Japanese language learning, learning support	Konan City ERUDI	Monday / Wednesday 19:00 - 21:00	Tel. 090-1338-3350 (Mr. Kise)
Club for Children <i>"Tampopo"</i>	Learning support for jr. & sr. high school, native language (Portuguese) training (mainly for elementary school students)	Kusatsu City Jinken Center	Wednesday 17:00 - 19:00	tampopo@digibo.tv
Japanese Language Class <i>"Niji"</i>	Support for children whose age already exceeded compulsory education to enable them to enter senior high school	Kusatsu Class (SHIPS)	from April to March Monday to Friday	Working Support Association for Foreign Residents Tel. 077-561-5110
Hiyori-terakoya Otsu	Learning support, measures to be taken in passing an entrance examination	Otsu City Seta Community Center (2nd floor)	Saturday 10:00 - 12:00	hiyori_o2@yahoo.co.jp

## Multicultural Children's Cafeteria/Others

SHIPS	Multicultural cafeteria for children	Kusatsu City SHIPS	4th Saturday 11:00 - 14:00	Tel. 077-561-5110
Kan-chan no chiisana ie	Multicultural coexistence, regional exchange events (children's cafeteria)	Omihachiman City Kan-chan no chiisana ie	Once every two months	Tel. 090-3708-3315
Hikone-shi Kodomo Tabunka Club Hikone City Children's Multicultural Club	Cooking, experiencing diverse cultures, visiting facilities, etc.	Hikone City	summer vacation, winter vacation	Human Rights Policy Division, Hikone City Tel. 0749-30-6113

## References:

“Guide book on Senior High School Admission” Shizuoka Prefecture version  
For students and guardians of foreign descents  
( Publisher: Hamamatsu NPO Network Center )

“Future Course Selection (Osaka)”  
(Publisher: Committee on school life support for returnees and foreign students)

Community newsletter for foreigners “Mimitarou” No.4  
(Shiga Intercultural Association for Globalization)

“Junior High School Life and Future Course 2013 ” “Learning Guidance Summary of the Ministry of Education, Culture, Sports, Science and Technology” Shiga Prefecture  
(Co-edited by Career Guidance section, Shiga Prefecture Junior High School Education Association and Japan Career Guidance Association)

*\*This booklet is the 2017 version of “Career Guidance for the Future 2005”. The previous booklet was based on the resources listed above and was published on July 2005.*

The Conference for Foreign Residents Support Network was established by Shiga Intercultural Association for Globalization in 2003. The members of the conference are composed of administrative bodies from Konan and the East Oumi region and private organizations like NPOs.

This booklet was completed as a result of the cooperative efforts of translators, editors and proofreaders. Gratitude is due to everyone who was involved in the editorial process.

The Committee on Career Guidance Project wishes that more children may continue to move toward their dreams for the future.

Academic/ Career Guidance for your Future

Publisher: Shiga Intercultural Association for Globalization (SIA) (July 2017)

2F Piazza-Omi, 1-1-20 Nionohama, Otsu City, Shiga-ken 〒520-0801

TEL 077-526-0931 FAX 077-510-0601 E-mail [siamail@mx.bw.dream.jp](mailto:siamail@mx.bw.dream.jp)

URL <http://www.s-i-a.or.jp>

: <https://www.facebook.com/siabiwako>

First edition (2005) editors:

Conference for Foreign Residents Support Network

Committee on Career Guidance Project

この冊子は（一財）自治体国際化協会から助成を受け、作成されたものです。